

# Business (BUS)

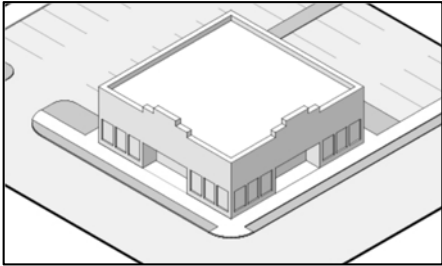
## Purpose

Business districts accommodate a variety of office and light industrial uses that are not ideally located in retail-focused commercial districts. Business districts include free standing office buildings, office parks, medical facilities and multi-tenant professional offices. Business districts may also include research or other light industrial uses where these uses are compatible with, or accessory to, office and professional uses in the area. Light assembly or manufacturing may be appropriate where high-quality planned developments integrate a mix of office and light industrial uses. In business districts, complementary retail and services should be limited in scale and carefully integrated with surrounding business uses.

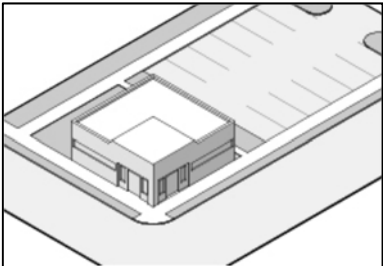
## Dimensions

Building Types	Building Size (max. sq. ft.)	Lot Area (min. sq. ft.)	Setbacks (min. ft.)				Lot Coverage (max, %)	Max Height (ft.)
			Front [1]	Interior [2]	Abutting Street	Rear		
Office Flex	n/a	n/a	25	5	20	10	60	40
	Notes:	[1] Where all the frontage on one side of the street between two intersecting streets is located in the BUS District, no front yard shall be required. Where the frontage on one side of the street between two intersections is located partly in the BUS district and partly in any residential district, the front yard requirements shall be the same as those in the residential district. [2] BUS adjoining residential shall provide a 10-foot side yard setback.						

## Building Types



Community Building



Office and Flex Office

## Uses

On the reverse side is a list of the allowed and special uses within this district:

Allowed Uses:

- Accessory Car Wash
- Antenna and Antenna Support Structure
- Artisan/Light Manufacturing
- Automated Teller Machine
- Barber[shop], Beauty Shop, Spa
- Brewery, Distillery or Winery
- Building Maintenance, Sales and Service
- Bus Garage and Equipment Maintenance
- Bus Terminal
- Business and Professional Office
- Commercial Auto Rental Services
- Commercial Auto Repair Services
- Commercial Auto Sales
- Car Wash
- Child Care Center
- Commercial (Non-hazardous)
- Commercial Parking
- Commercial Services, General
- Construction Contractor
- Data Center
- Digital Production
- Drugstore/Pharmacy w/ drive-thru
- Drug-store/Pharmacy
- Dry Cleaner/Laundromat/ Laundry Service Station
- Dry Cleaner w/ drive-thru
- Electric Vehicle Charging Station
- Financial Institution
- Financial Institution w/ drive-thru
- Government Offices and Facilities
- Group Day Care Home
- Home Supply and Lumberyard
- Hotel and Motel
- Medical and Dental Offices and Clinics
- Medical and Research Laboratory
- Microbrewery
- Minor Facilities/Office
- Park and Ride Lot
- Personal Auto Rental Services
- Personal Auto Repair Services
- Personal Auto Sales
- Plant Nursery and Greenhouse
- Public Service Facilities
- Publishing
- Restaurant
- Restaurant w/ Drive-Thru
- Retail, General
- Retail w/ Drive-Thru
- School, Vocational-Technical and Trade
- Self-Storage/Personal Property
- Service Stations
- Studio – Art, Fitness, Music, Dance
- University or College
- Wholesale Sales and Distribution

Special Uses:

- Airport and Passenger Terminal
- Food Truck Court
- Major Facilities/Service Yard
- Park and Playground
- Recreation Areas and Facilities
- Solar Array
- Telecommunications Tower and Facility
- Wind Energy, Commercial
- Wind Energy, Small